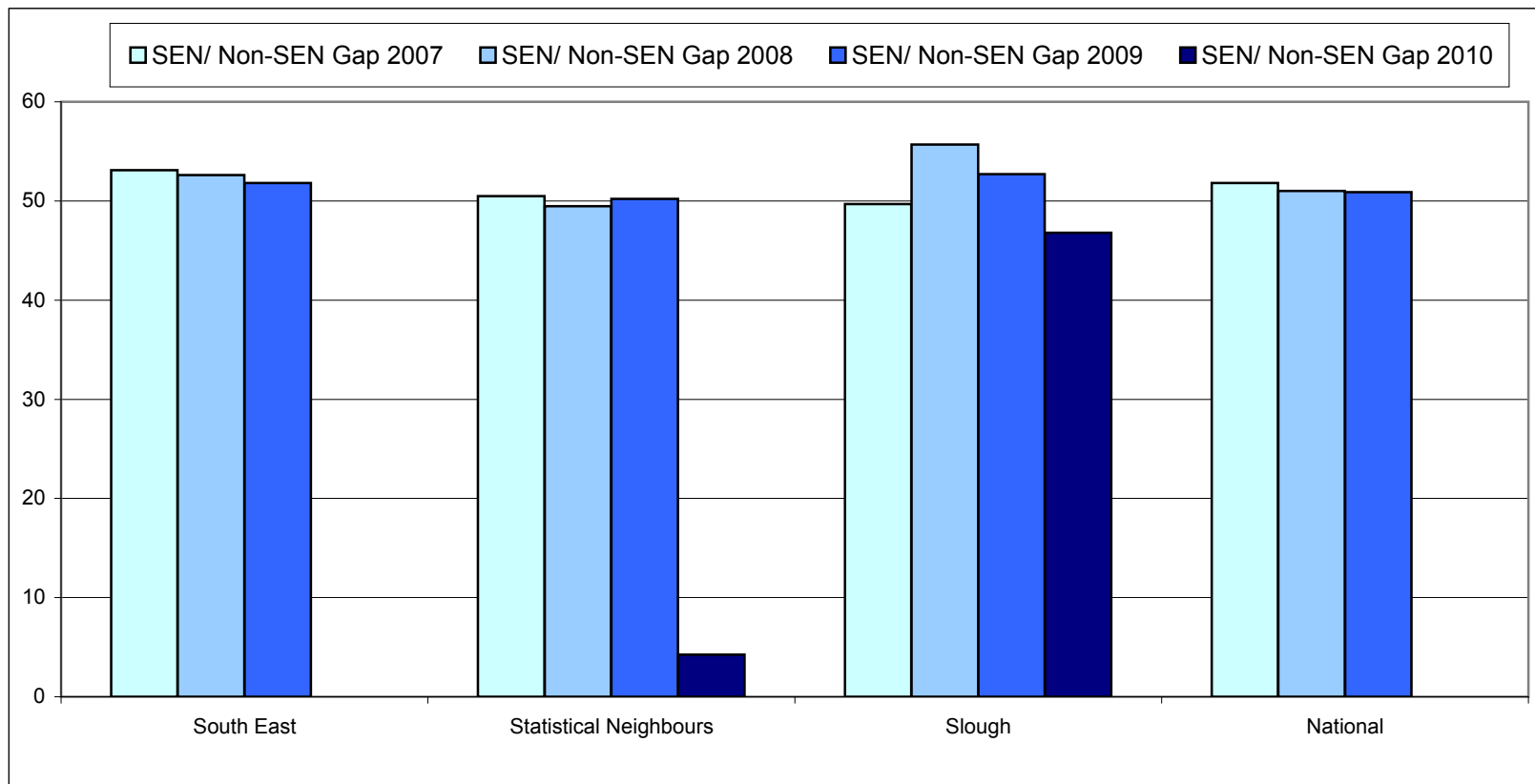
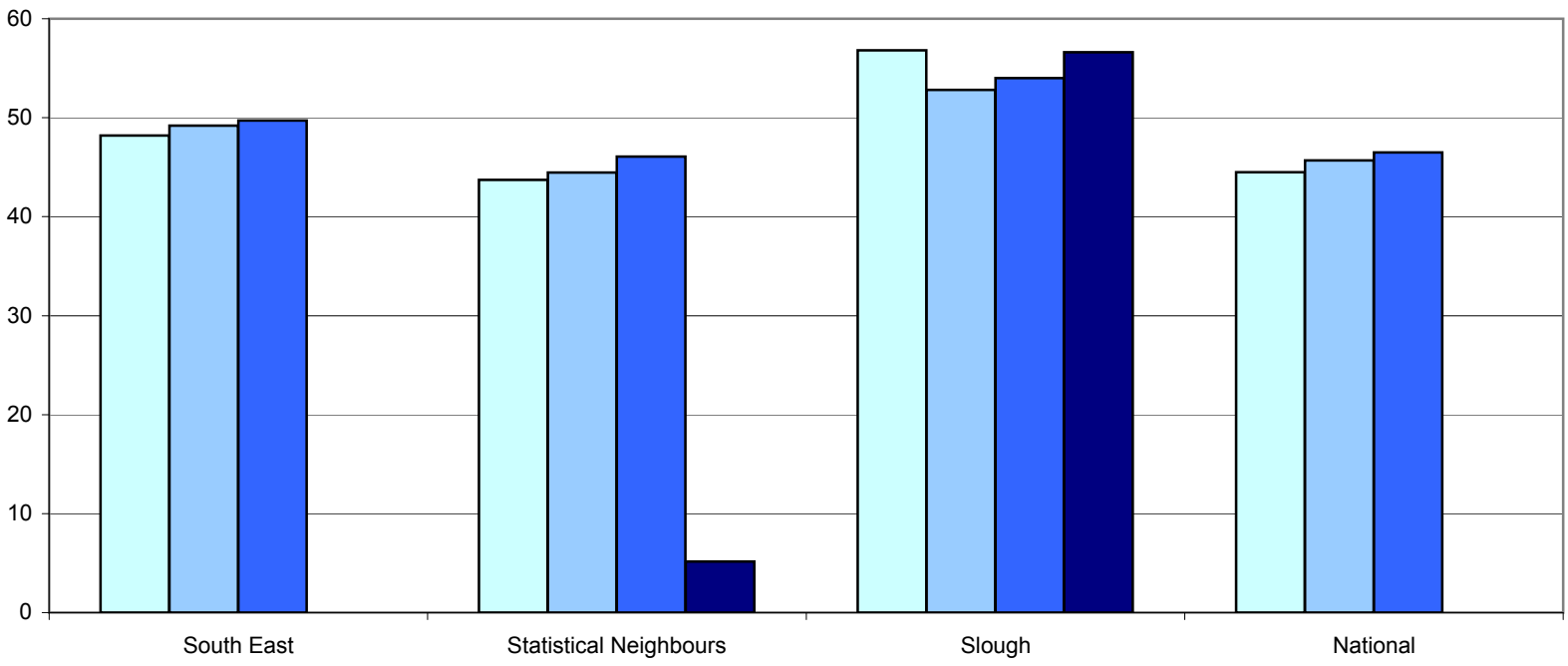


NI 104 - Key Stage 2 Results by Special Educational Needs (SEN) Gap in Slough LA in Comparison with its Statistical Neighbours

	Percentage of pupils achieving Level 4 or above in both English and Maths															
	No identified SEN				SEN				All Pupils				SEN/ Non-SEN Gap			
	2007	2008	2009	2010	2007	2008	2009	2010	2007	2008	2009	2010	2007	2008	2009	2010
Birmingham	78.1	81.8	81.2		26.0	30.9	29.3		65.8	68.7	68.0	68.0	52.1	50.9	51.9	0.0
Blackburn	82.4	85.2	84.5		28.9	32.8	30.2		68.4	73.0	69.6	71.0	53.5	52.4	54.3	0.0
Bradford	79.2	81.0	81.5		27.9	31.5	30.3		66.6	68.6	68.0	-	51.3	49.5	51.2	0.0
Coventry	81.6	82.0	81.0		30.8	30.9	33.7		68.1	69.2	67.9	72.0	50.8	51.1	47.3	0.0
Enfield	80.7	86.0	86.0		32.8	41.1	39.1		68.5	74.5	71.7	-	47.9	44.9	46.9	0.0
Hillingdon	82.9	83.3	84.9		33.0	38.1	35.4		71.3	72.0	72.6	76.0	49.9	45.2	49.5	0.0
Hounslow	85.4	87.1	89.0		41.6	40.1	40.6		71.4	73.1	73.8	74.0	43.8	47.0	48.4	0.0
Luton	74.2	79.2	79.4		20.9	30.6	30.4		63.4	68.1	67.4	69.0	53.3	48.6	49.0	0.0
Redbridge	86.3	85.8	86.3		36.3	38.4	39.1		76.0	75.8	76.5	78.0	50.0	47.4	47.2	0.0
Wolverhampton	76.0	79.8	81.7		22.8	28.3	27.8		66.5	69.8	69.2	72.0	53.2	51.5	53.9	0.0
South East	83.8	85.5	85.0		30.7	32.9	33.2		71.5	72.8	72.1	73.0	53.1	52.6	51.8	0.0
Statistical Neighbours	80.5	83.0	83.4		30.0	33.6	33.2		68.3	71.0	70.1	72.2	50.5	49.5	50.2	4.3
Slough	78.7	82.2	82.0	85.7	29.0	26.5	29.3	38.9	65.4	68.7	66.8	70.2	49.7	55.7	52.7	46.8
National	82.7	84.6	84.4		30.9	33.6	33.5		71.1	73.0	72.3	74.0	51.8	51.0	50.9	0.0
Diff from National	-4.0	-2.4	-2.4	85.7	-1.9	-7.1	-4.2	38.9	-5.7	-4.3	-5.5	-3.8	2.1	-4.7	-1.8	46.8
Slough Ranking	131st	113th	120th		96h	138th	120th		136th	137th	144th		39th	137th	103rd	
Quartile banding													B	D	D	
Gap between Slough FSM and National Non SEN													53.7	58.1	55.1	
Quartile banding													D	D	D	



SEN/ Non-SEN Gap 2007 SEN/ Non-SEN Gap 2008 SEN/ Non-SEN Gap 2009 SEN/ Non-SEN Gap 2010



NI 104 - School level achievement gap between pupils with Special Educational Needs (SEN) and their peers

	Number of Pupils 2010	Pupils Achieving Level 4 or Above in both English and Mathematics										
		No SEN			SEN			All Pupils			SEN/Non SEN Gap	
		2009	2010	Diff	2009	2010	Diff	2009	2010	Diff	2009	2010
Arbour Vale School	15	-	-	-	0%	0%	0%	0%	0%	0%	-	-
Castleview Primary School	-	100%	-	-	88%	-	-	98%	-	-	13%	-
Cippenham Junior School	97	94%	84%	-10%	45%	47%	1%	71%	72%	1%	48%	37%
Claycots School	78	94%	81%	-14%	64%	64%	0%	82%	78%	-4%	30%	17%
Colnbrook CoE Primary School	17	83%	70%	-13%	50%	29%	-21%	75%	53%	-22%	33%	41%
Foxborough Primary School	44	67%	85%	18%	6%	25%	19%	41%	52%	11%	60%	60%
Godolphin Junior School	91	90%	96%	7%	16%	56%	40%	56%	68%	12%	73%	40%
Holy Family Catholic Primary School	61	100%	93%	-7%	43%	0%	-43%	88%	87%	-1%	57%	93%
Iqra Slough Islamic School	89	67%	68%	0%	15%	33%	19%	47%	57%	10%	53%	34%
James Elliman School	89	89%	89%	0%	41%	35%	-6%	71%	63%	-8%	48%	54%
Khalsa Primary School	21	-	88%	-	-	0%	-	-	71%	-	-	88%
Littledown School	4	-	-	-	0%	0%	0%	0%	0%	0%	-	-
Lynch Hill Primary School	-	100%	-	-	79%	-	-	91%	-	-	21%	-
Marish Primary School	86	67%	91%	24%	10%	33%	23%	44%	71%	27%	57%	58%
Montem Primary School	69	70%	67%	-3%	11%	33%	23%	44%	57%	13%	59%	33%
Our Lady of Peace Catholic Junior School	88	87%	88%	1%	30%	53%	23%	73%	81%	8%	57%	36%
Parlaunt Park Primary School	51	82%	100%	18%	50%	67%	17%	74%	88%	14%	32%	33%
Penn Wood Primary School	59	71%	81%	10%	27%	33%	6%	50%	59%	9%	45%	48%
Pippins School	26	81%	94%	13%	17%	25%	8%	67%	73%	6%	64%	69%
Priory School	95	87%	89%	2%	13%	29%	16%	70%	76%	6%	75%	61%
Ryvers Primary School	60	91%	94%	2%	8%	17%	9%	73%	78%	5%	84%	77%
St Anthony's Catholic Primary School	54	84%	82%	-3%	38%	40%	2%	76%	78%	2%	46%	42%
St Ethelbert's Catholic Primary School	53	86%	94%	7%	29%	65%	36%	51%	74%	23%	57%	29%
St Mary's CoE Primary School	58	73%	79%	6%	0%	20%	20%	68%	70%	2%	73%	59%
Western House Primary School	58	98%	96%	-2%	50%	54%	4%	90%	86%	-4%	48%	42%
Wexham Court Primary School	60	80%	88%	8%	27%	11%	-16%	67%	65%	-2%	54%	77%
Local Authority Average	1,423	82.0%	85.7%	3.7%	29.3%	38.9%	9.6%	66.8%	70.2%	3.4%	52.7%	46.8%
England (all schools)	-	84.4%	-		33.5%	-		72.3%	74.0%	1.7%	50.9%	
Difference from England	-	-2.4%			-4.2%			-5.5%	-3.8%		1.8%	

NI 105 - School level achievement gap between pupils with Special Educational Needs (SEN) and their peers

	Number of Pupils 2010	Pupils Achieving GCSE 5+ A* to C including English and Mathematics										
		No SEN			SEN			All Pupils			SEN/Non SEN Gap	
		2009	2010	Diff	2009	2010	Diff	2009	2010	Diff	2009	2010
Arbour Vale School	21	-	-	-	0%	0%	0%	0%	0%	0%	-	-
Baylis Court School	137	64%	56%	-7%	21%	24%	2%	48%	42%	-	43%	33%
Beechwood School	133	41%	51%	10%	10%	24%	14%	25%	39%	15%	31%	27%
Haybrook College	9	-	-	-	-	-	-	-	-	-	-	-
Herschel Grammar School	118	99%	100%	1%	67%	50%	-17%	97%	99%	2%	32%	50%
Langley Academy	174	-	49%	-	0%	5%	5%	33%	44%	11%	-	44%
Langley Grammar School	153	98%	100%	2%	100%	0%	-100%	98%	100%	2%	-2%	100%
Slough and Eton CE School	147	39%	70%	32%	0%	6%	6%	32%	49%	17%	39%	64%
Slough Grammar School	157	99%	99%	1%	83%	100%	17%	97%	99%	2%	15%	-1%
St. Bernard's Catholic Grammar School	138	100%	98%	-2%	100%	80%	-20%	100%	98%	-2%	0%	18%
St. Joseph's Catholic High School	119	41%	38%	-4%	5%	8%	3%	34%	31%	-	37%	30%
Westgate School	149	75%	66%	-9%	33%	24%	-10%	63%	52%	-12%	42%	43%
Wexham School	137	41%	53%	12%	5%	4%	-1%	31%	45%	-	35%	49%
Local Authority Average	1,592	72.3%	74.2%	1.9%	18.3%	17.6%	-0.7%	59.3%	62.4%	3.1%	54.0%	56.6%
England (all schools)	-	61.0%	-		14.5%	-		50.9%	-	-	46.5%	
Difference from England	-	11.3%			3.8%			8.4%	-		7.5%	

2010 figures based on provisional DCSF e-results (Jul 10). 2009 figures based on DCSF performance tables.

2010 figures include recent arrivals to the UK (2009 figures exclude recent arrivals)